

## All Sport® Interface for DakStats®

The All Sport Interface for DakStats Basketball or DakStats Volleyball allows you to connect your DakStats software to an All Sport® 5100 scoreboard controller to operate Daktronics stats displays. Receive player, foul and point information directly from DakStats Basketball or aces, kills, digs or blocks directly from DakStats Volleyball. This interface eliminates the necessity for the scoreboard operator to track substitutions and players when entering stats and scores. The All Sport Interface can also be used to send clock information from the All Sport controller to DakStats Football or Basketball to eliminate the need for the DakStats operator to track the game time.

This quick start guide will assist you in setting up the interface.

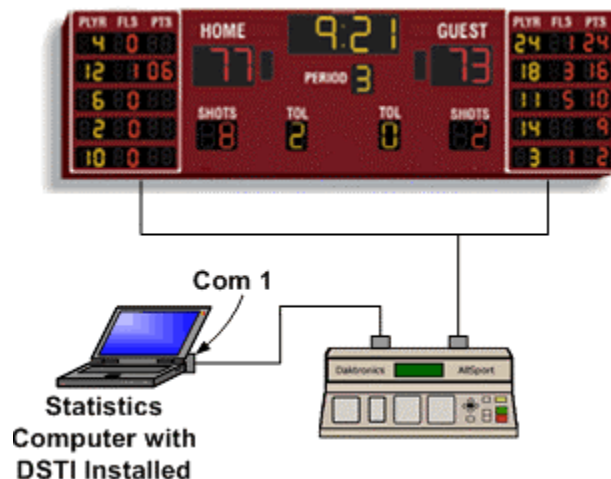


Figure 1: DakStats All Sport Interface

## HARDWARE SETUP

### Connecting your DakStats computer to the All Sport 5100 controller

Before you begin, make sure your All Sport controller is connected to your scoreboard and that you are able to update scoreboard and statistics information.

- STEP 1** Changing a Comport Com Port Number
1. Click **Start** | **Settings** | **Control Panel**
  2. Double click on **System**.
  3. Go to the **Hardware** or **Device Manager** Tab. Open the Device Manager
  4. Click the + beside **Ports Com and LPT**
  5. Double click on **Communications Port**
  6. Click the **Port Settings** tab and then click **Advanced**.
  7. Change to Port number to any available Com (Ex. *Com 4*). Click **OK** and close the device manager.

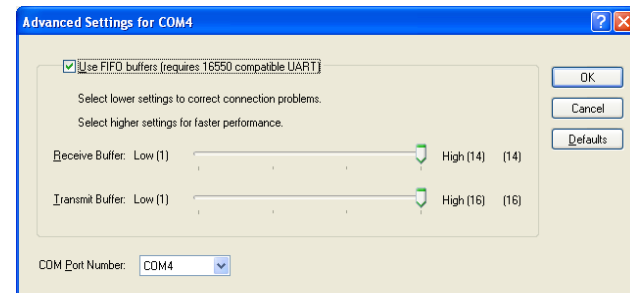


Figure 2: Com 4

- STEP 2** Connect the other end of the serial cable to the port labeled **COMPUTER PORT (J5)** on the back of your All Sport controller.

Note: You may also connect to the 25-pin I/O port (J6).



## SOFTWARE SETUP

### Configuring Daktronics Scoring and Timing Interface (DSTI) Software

DSTI software translates information tracked by DakStats into a format other equipment or software can use. DSTI must be running for the interface to operate correctly.



Figure 3: Daktronics Scoring and Timing Interface Software

- STEP 1** Install DSTI from the installation CD you received with the All Sport Interface Kit on the same computer as your DakStats software.
- STEP 2** After installation click **Start | Programs | Daktronics | DSTI | DSTI** to start the DSTI program.
- STEP 3** If necessary, maximize the DSTI screen. Select **Basketball**, **Football** or **Volleyball** in the **Sport** drop down box as shown in **Figure 4**.

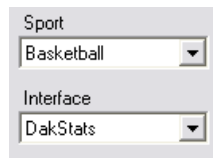


Figure 4: DSTI Configuration

- STEP 4** Make sure **DakStats** is selected in the **Interface** box as shown in **Figure 4**.
- STEP 5** At the top of the DSTI window, click **Edit | Data Configuration**.
- STEP 6** On the data configuration screen, make sure the **Sport** is selected to the proper sport. See **Figure 5**.

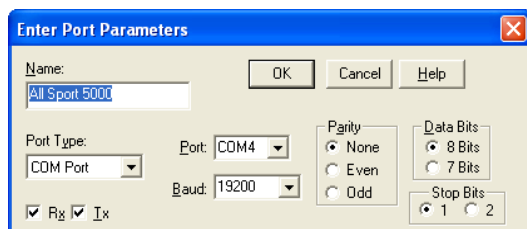


Figure 5: DSTI Data Configuration

- STEP 7** For the Database Path, click **Browse**. Browse to **C:\Program Files\Daktronics\DakStats(R) Basketball (Football or Volleyball)**. See **Figure 5**.
- STEP 8** Click **OK** to close the data configuration window.



- STEP 9** Change the Comport Com Port number on DSTI.
1. Open Daktronics Scoring-Timing Interface Application
  2. Go **Edit | Configure All Sport**
  3. Check **Port** to confirm that the COM is set as the same number as the Com Port on your Computer. See **Figure 6**.
  4. Click **OK** to close.



*Figure 6: Port Parameters*

- STEP 10** Minimize DSTI.

NOTE: DSTI must be running for the All Sport Interface to function. If closed, communication with your display controller will stop.

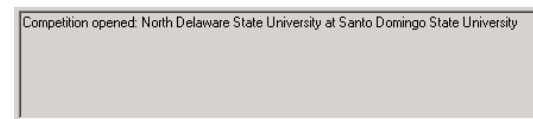
## Using the All Sport Interface for DakStats

Now that you have installed and configured DSTI, using the interface is simple.

- STEP 1** Make sure DSTI is running minimized. You may configure DSTI to Start automatically from DakStats by clicking **Configure | Auto Start Interface**.

- STEP 2** Open DakStats. Click **File | Open Competition** and open a completed or incomplete game that has player stats entered.

- STEP 3** When you have a competition opened, the message log at the bottom of the DSTI screen should display that the competition has been opened. See **Figure 7**.



**Figure 7:** DSTI Message Log

- STEP 4** Your DakStats software should now be providing game information to your All Sport controller.



### Troubleshooting

If statistics are not being displayed or updated, this trouble shooting section will help you identify the problem.

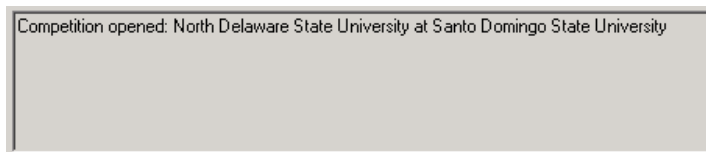
*NOTE: When the interface is functioning properly, the Player, Inv Sub, and Mass Sub buttons on the All Sport controller will display a "Stats Received: Key Disabled" message when pressed. If you receive this message the data is reaching the All Sport controller. You will need to double check scoreboard connections.*

If the Sub buttons on the all Sport Controller are not disabled, make sure:

- Cables are still connected
- DSTI is running with the proper sport and interface selected
- Make sure there is a competition opened in DakStats

### The competition is not appearing in the Message Log at the bottom of the DSTI Window.

1. Force DSTI to update the information being sent to the display by opening DSTI, click **Control | Update RTD Outputs**.
2. Look at the DSTI Message Log at the bottom of the DSTI Window. It should display that a competition has been opened.

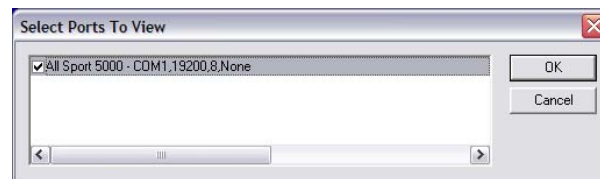


**Figure 8:** DSTI Message Log

If no information is being displayed, check cabling then close DSTI and DakStats. Wait a few seconds after the programs have been closed, then reopen DakStats, DSTI and then a DakStats competition. After a few seconds the competition should appear in the DSTI Message Log.

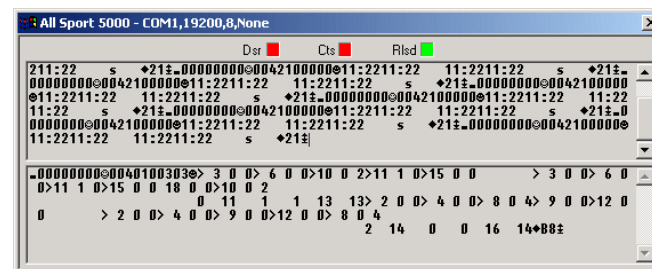
### I see the competition in the DSTI Message Log, but nothing is appearing on my stats displays.

1. Open DSTI. Click **View | Monitor Ports**.



**Figure 9:** DSTI View Ports

2. Place a check beside the **AllSport 5000** port and shown in **Figure 9**. Click **OK**.
3. A window will appear showing what is being sent (BOTTOM) and received (TOP) through COM1 to your All Sport controller. See **Figure 10**.



**Figure 10:** DSTI Port Monitor

4. If you do not see data in the bottom portion of the DSTI Port Monitor window, click **Edit | Data Configuration** and make sure your database path is correct. See **Step 5 of Installing and Configuring Daktronics Scoring and Timing Interface (DSTI) Software**.